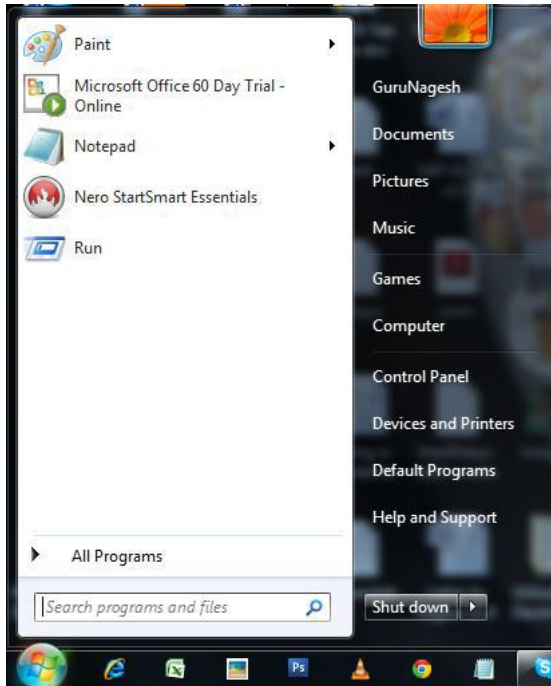
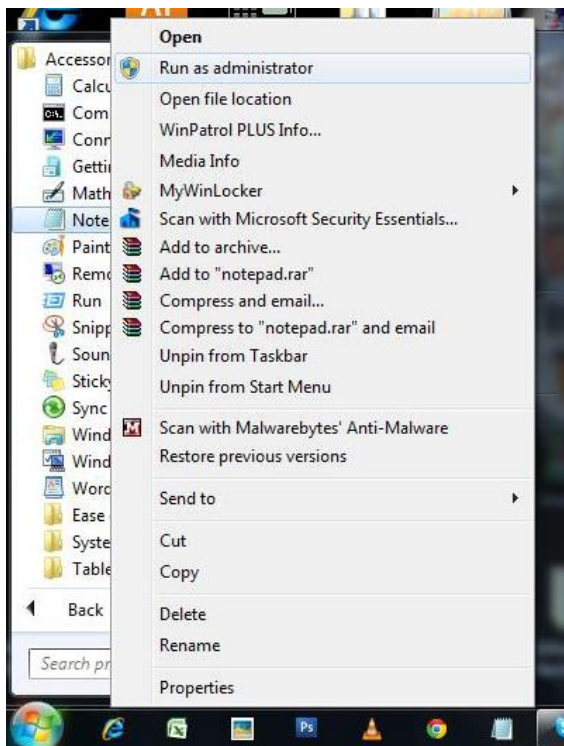


BEX Analyzer steps for Windows 7:

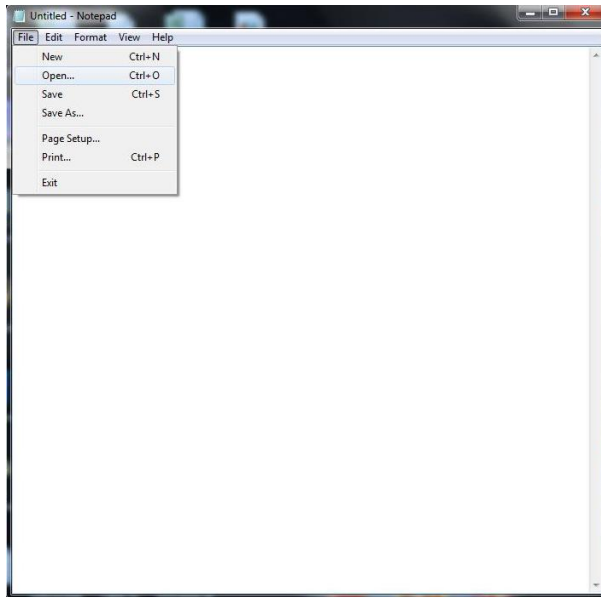
Go to start button



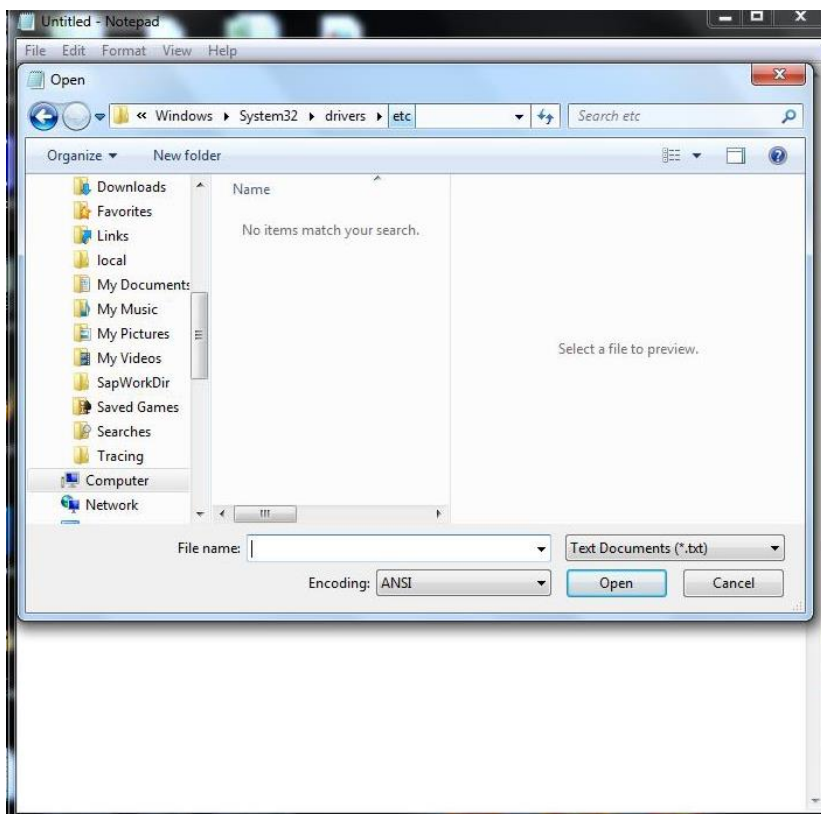
Go to All programs → Accessories → Notepad Right click → Run as administrator



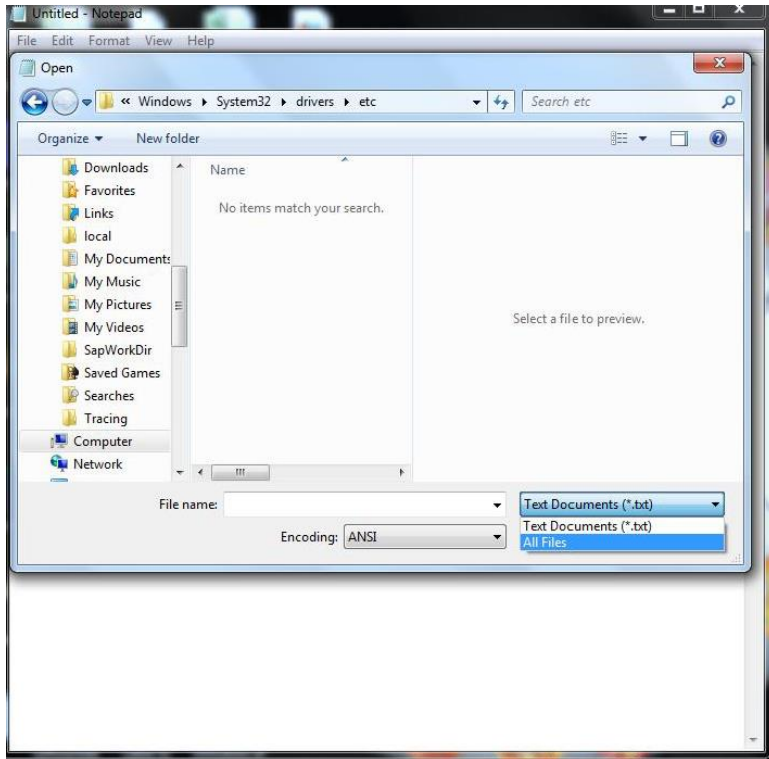
Then Go to file → click on open



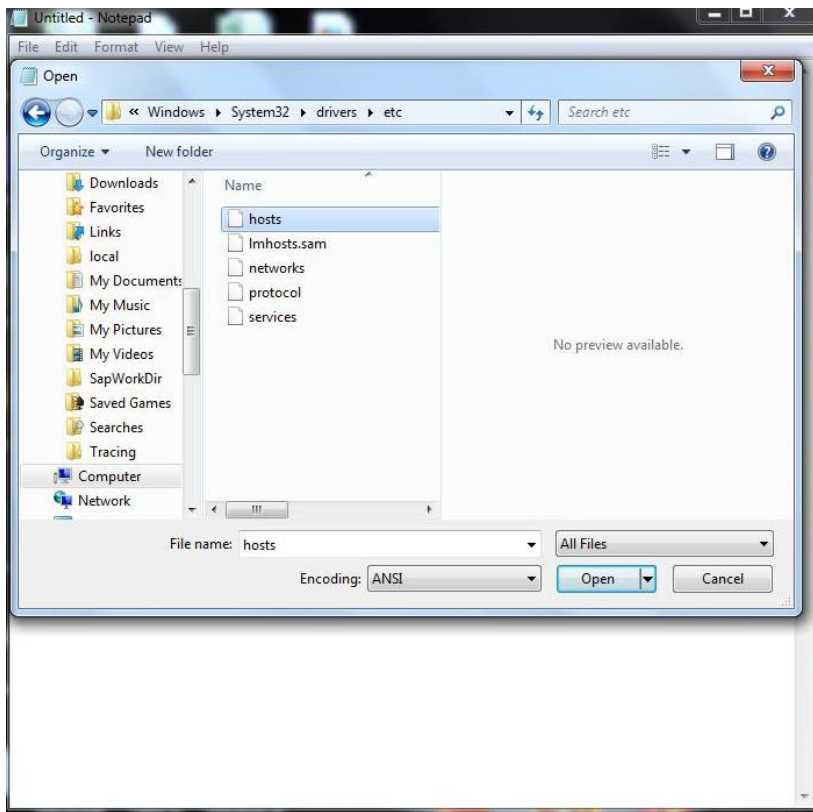
Go to My computer → C drive → Program files → windows → System32 → drivers → etc



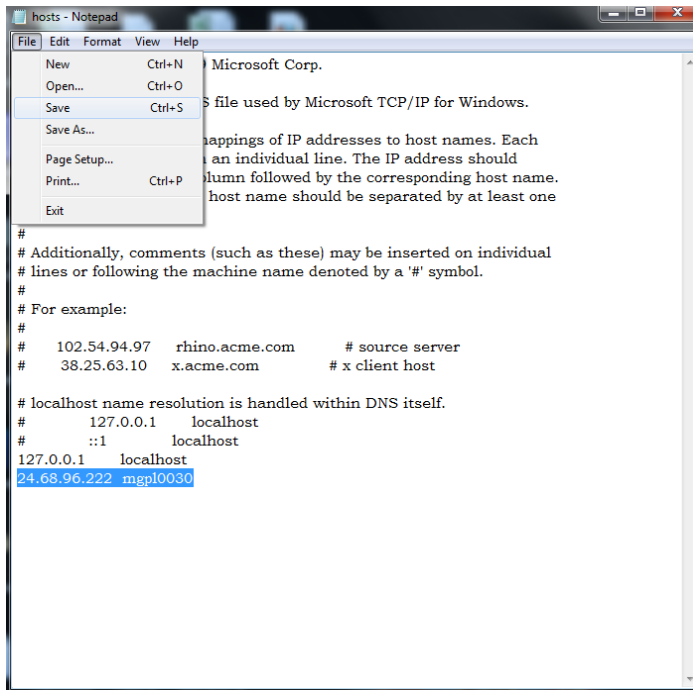
Change bottom side of All Files options



Click on host



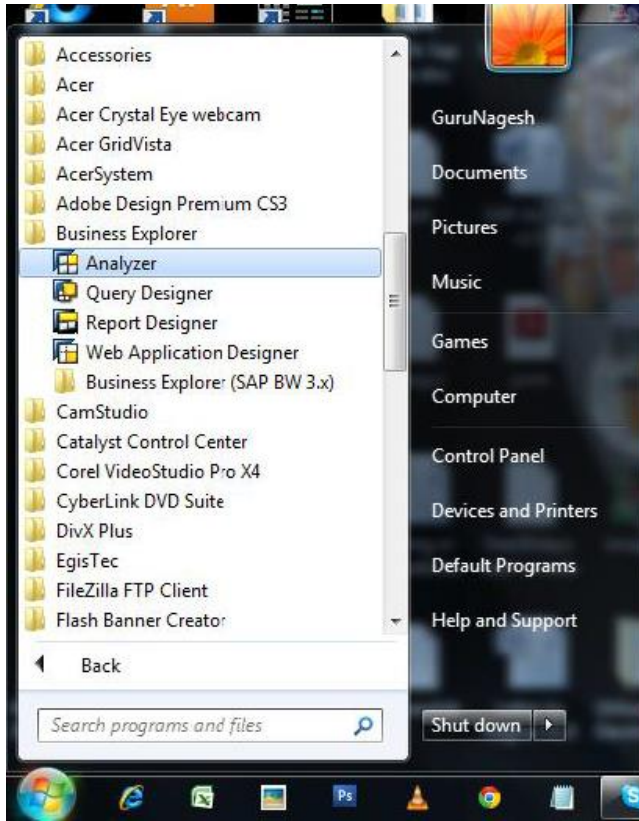
Enter ip address and computer name → then Save it



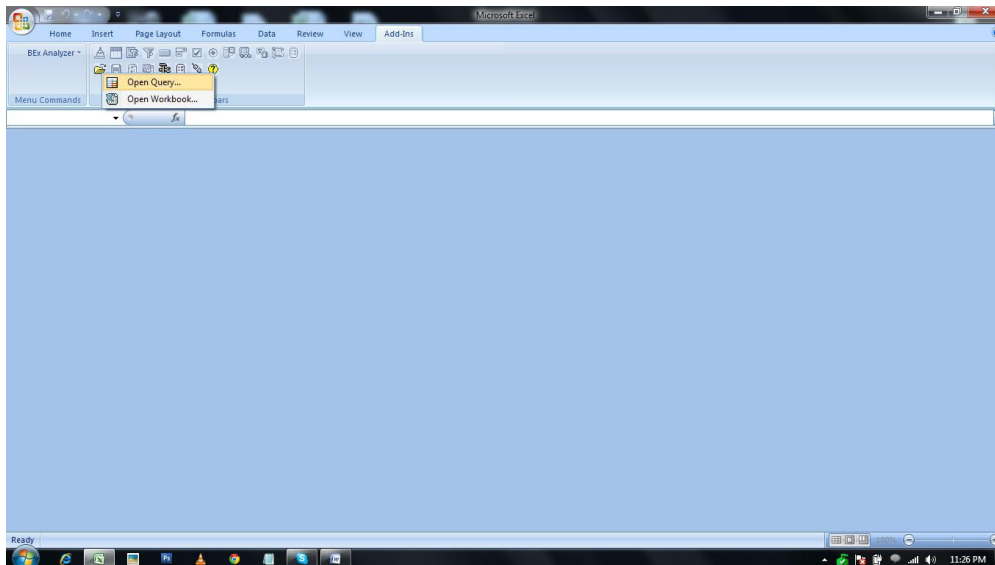
Application server set the computer Name → Ex mgpl0030



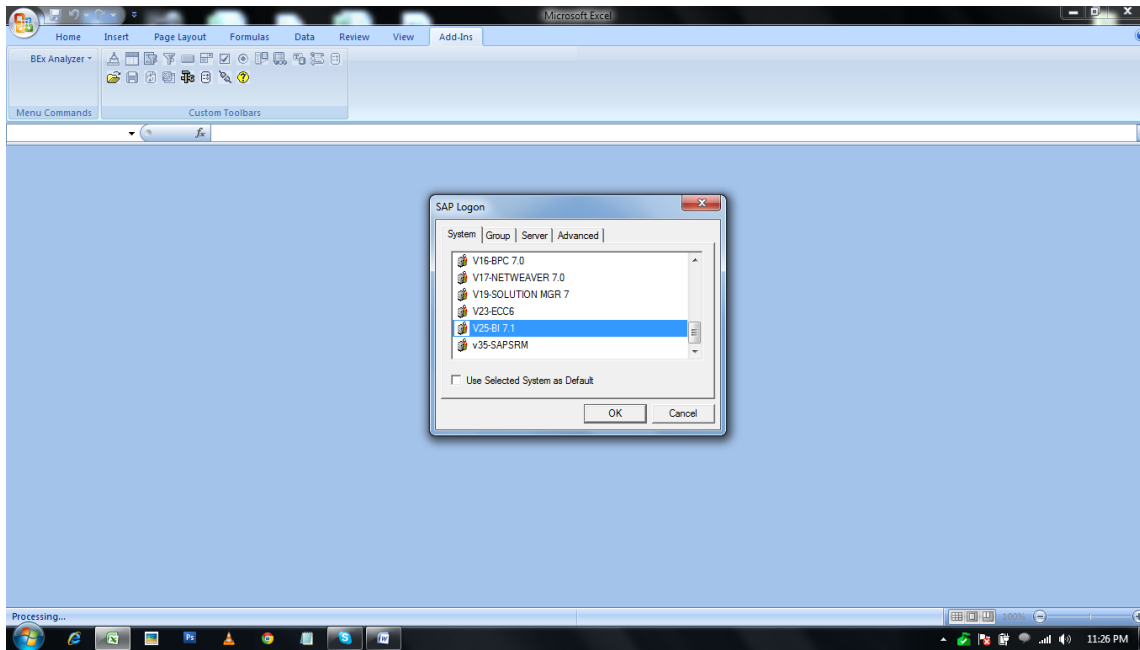
Go to start →programs →business explorer →Analyzer →then open



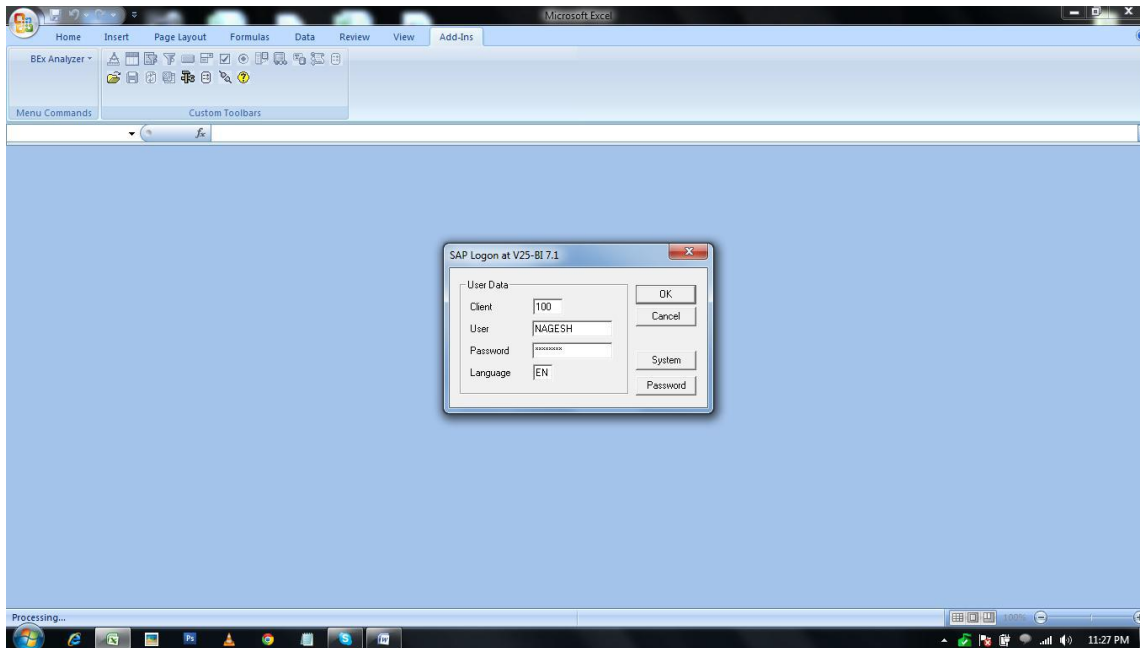
Click on Add-Ins →Open Workbooks or Queries any one



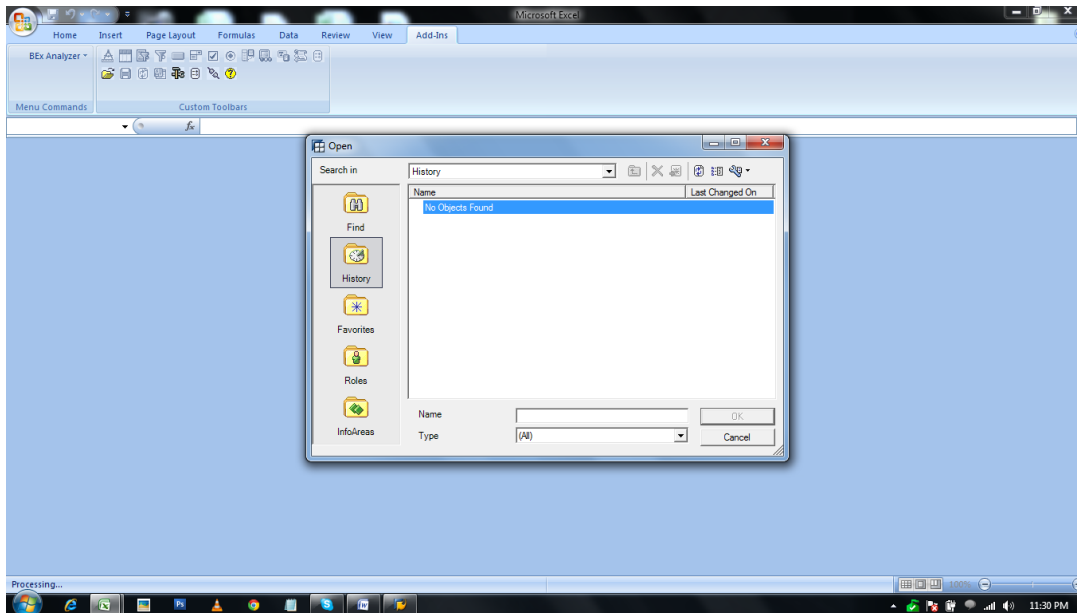
Open SAP BI →click on ok



Set the login details →click on ok

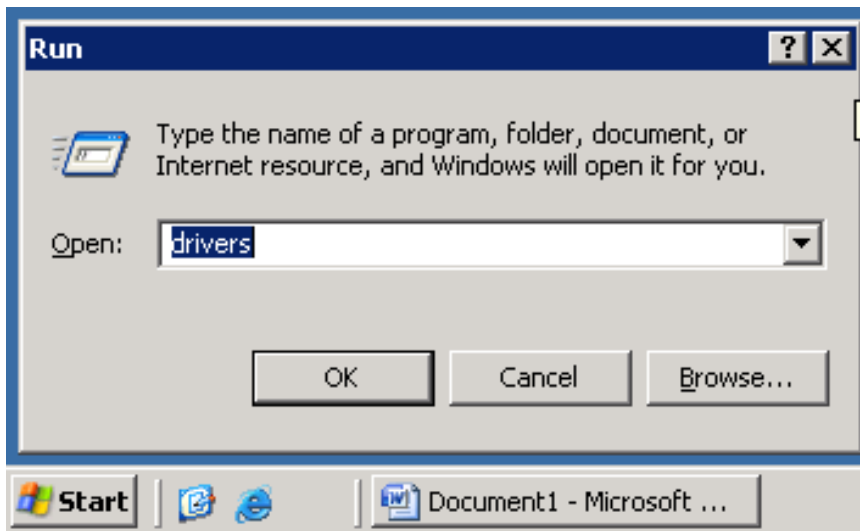


Then working the BEX Analyzer

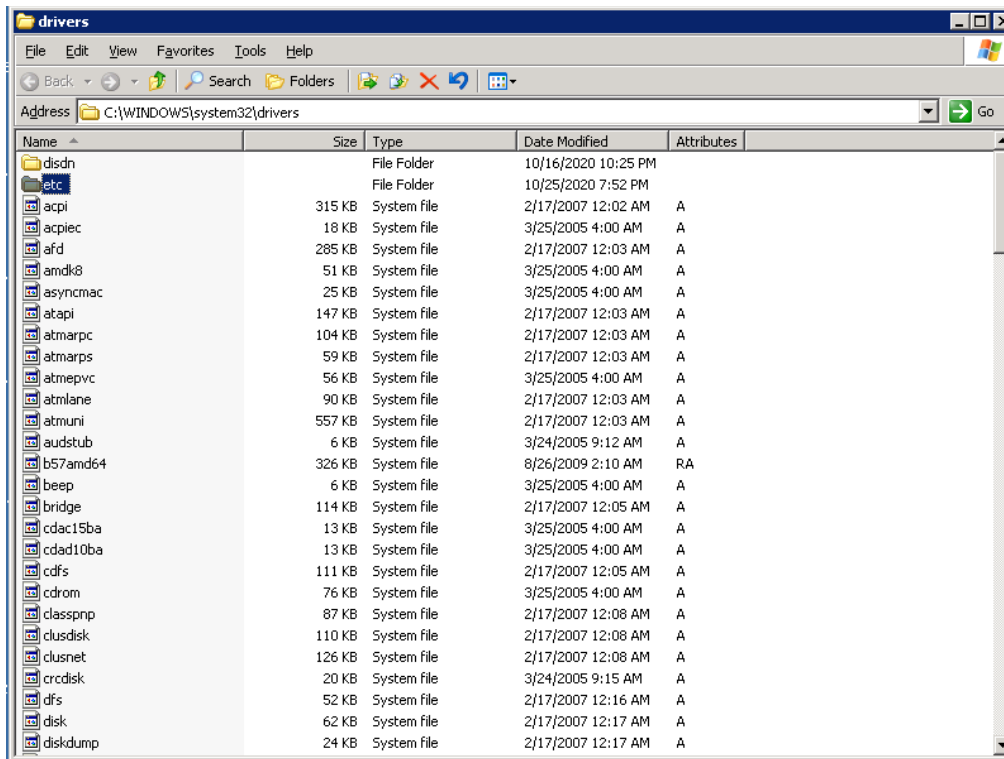


BEX Analyzer steps for Windows XP, Server Editions:

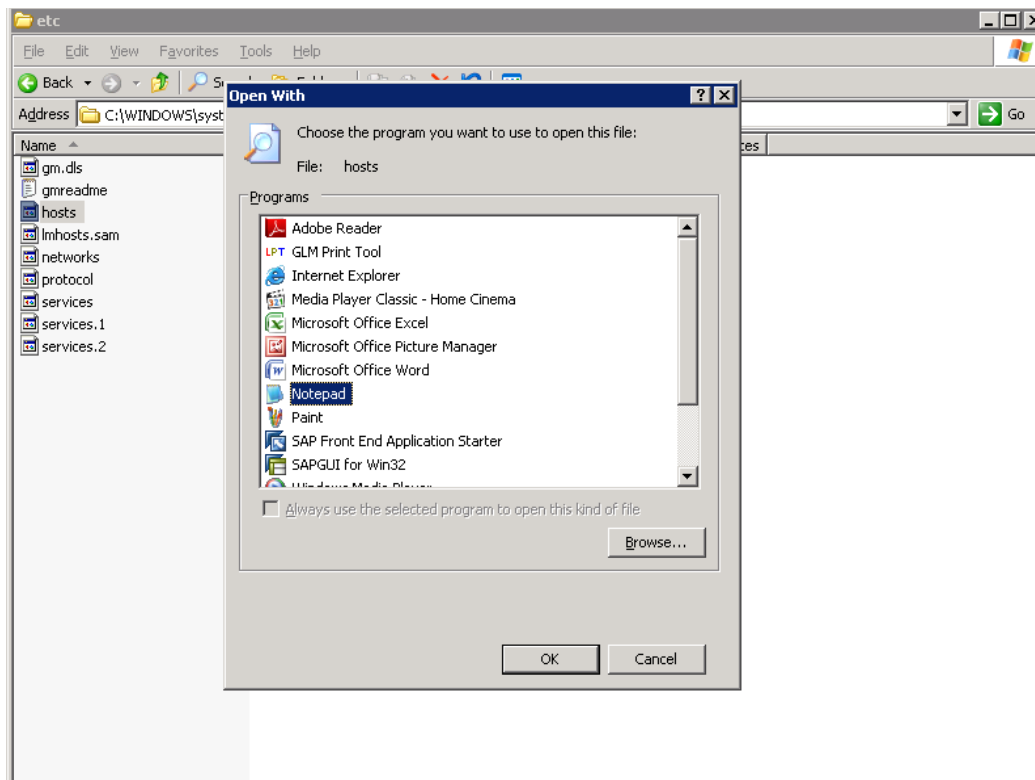
Go to start button →run options→ type drivers →click on ok



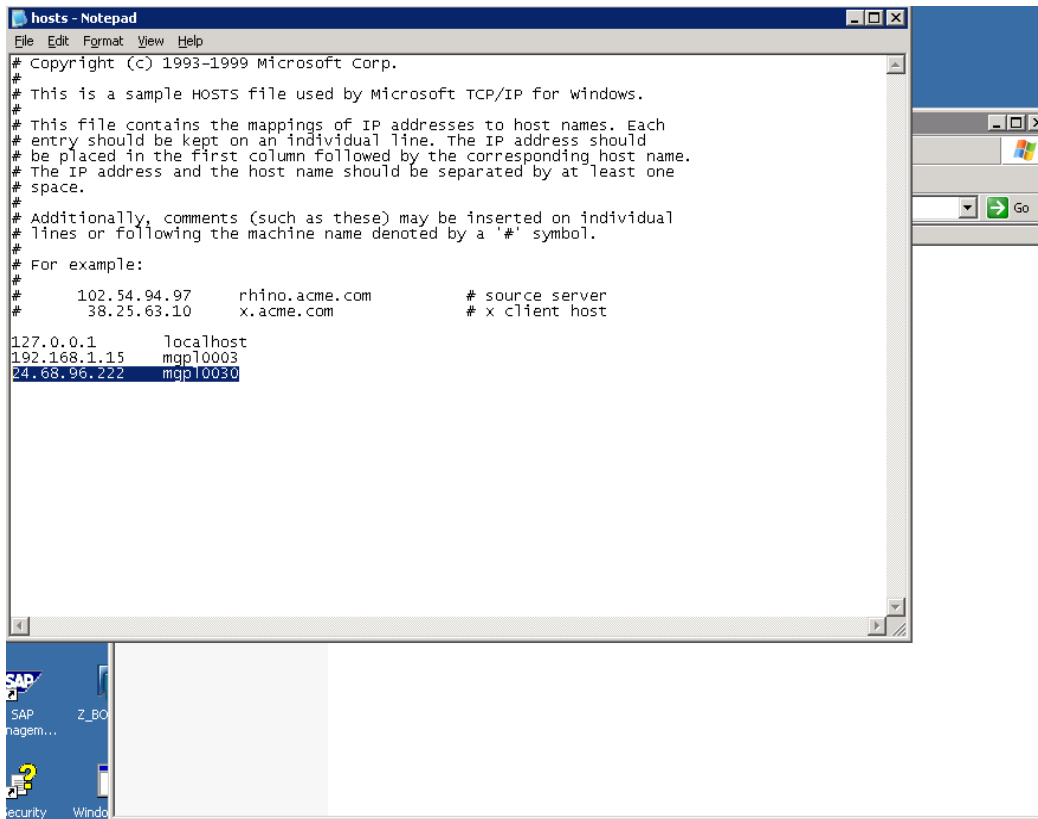
Then go to etc folder double click



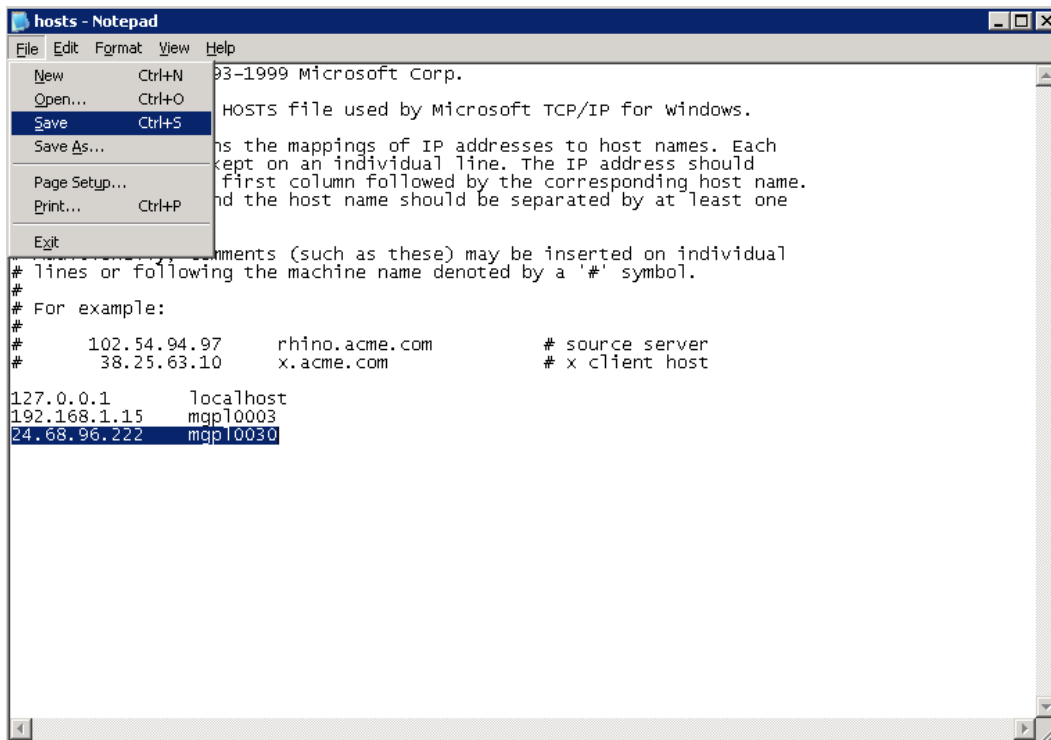
Then go to host file double click → open type notpad →click on ok



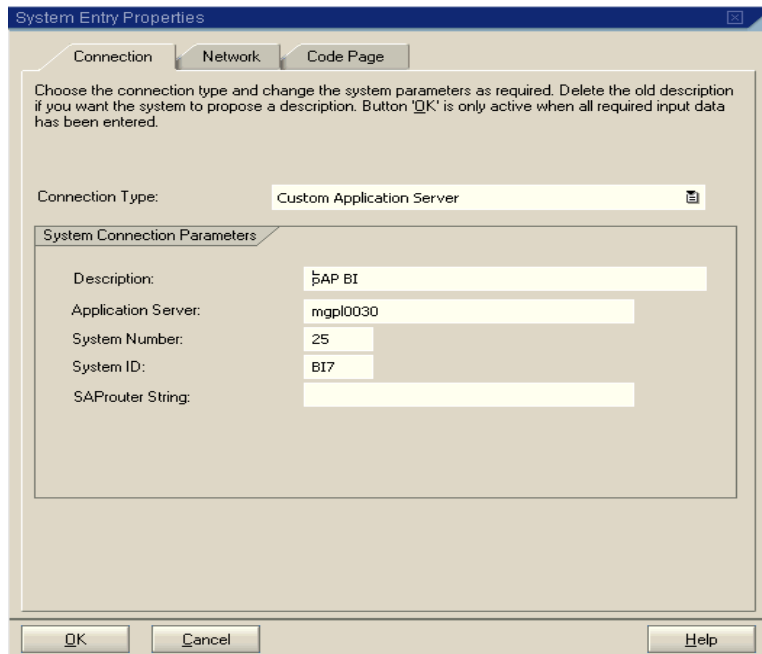
Enter ip address and computer name



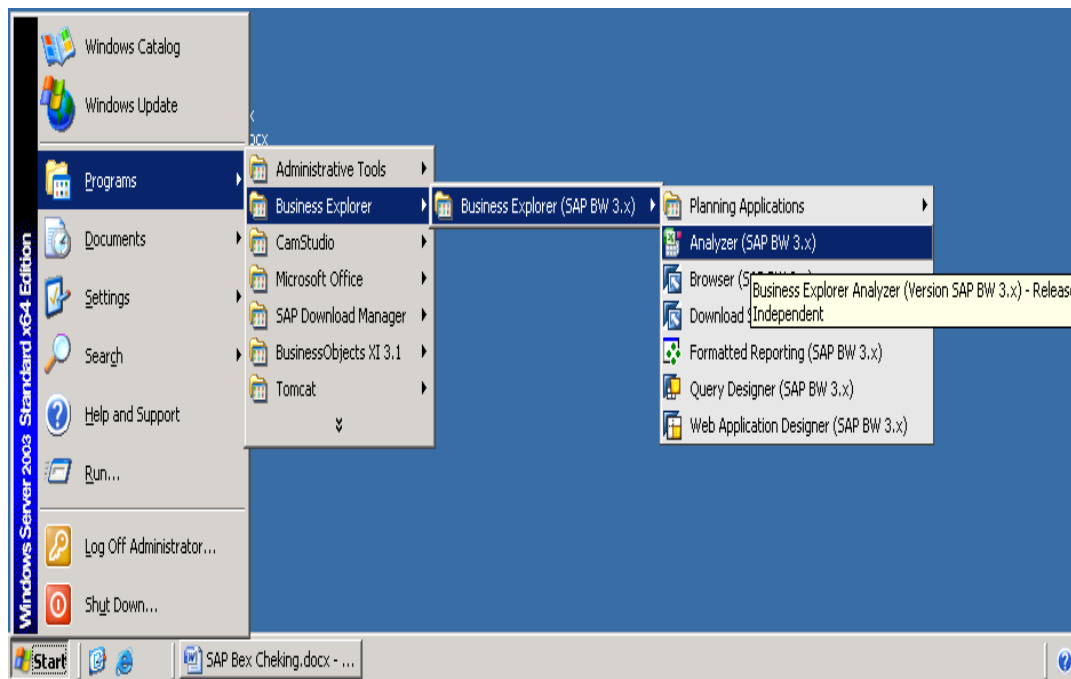
Then click on save it



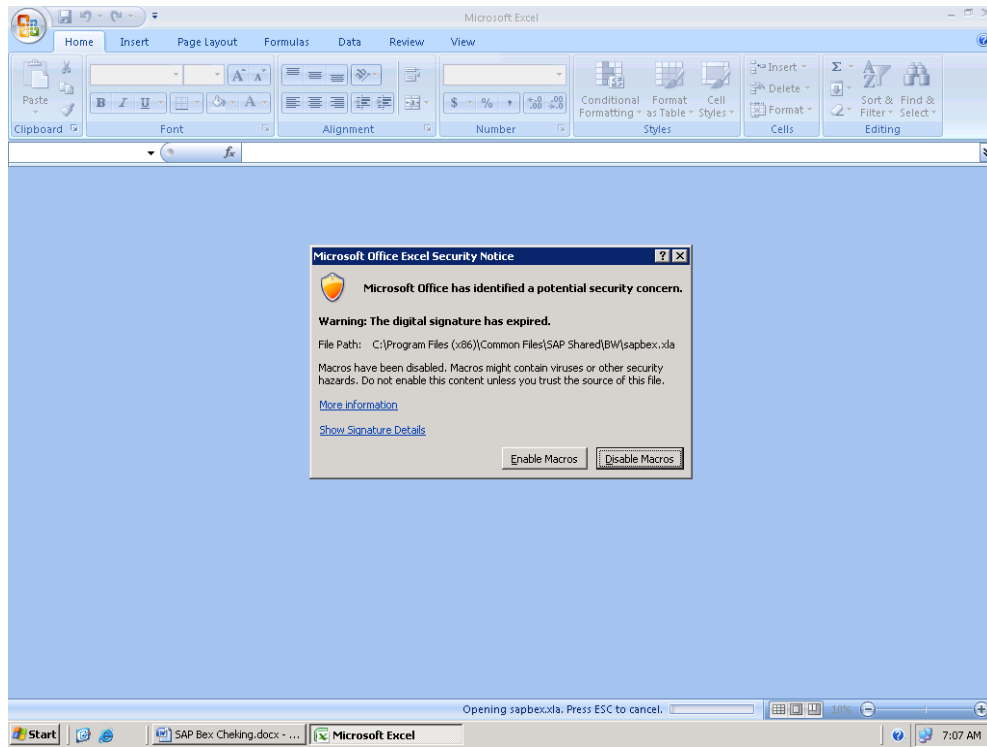
Application server set the computer → Ex mgpl0030



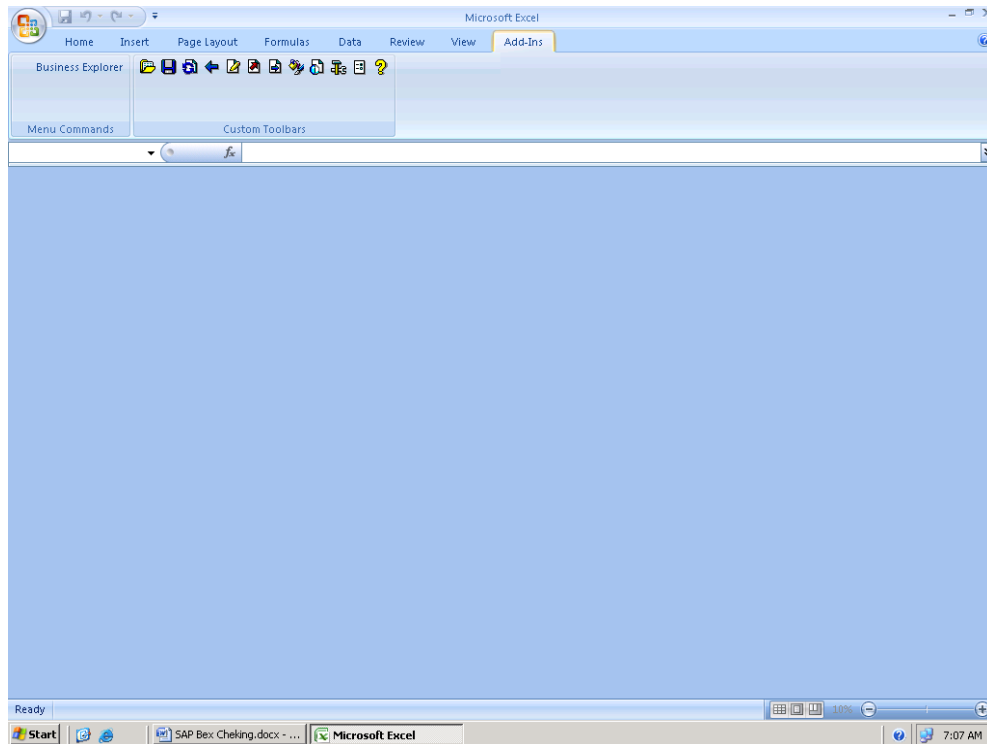
Go to start → programs → business explorer → Business Explorer (SAP BW 3.x) → Analyzer (SAPBW 3.x) → then open



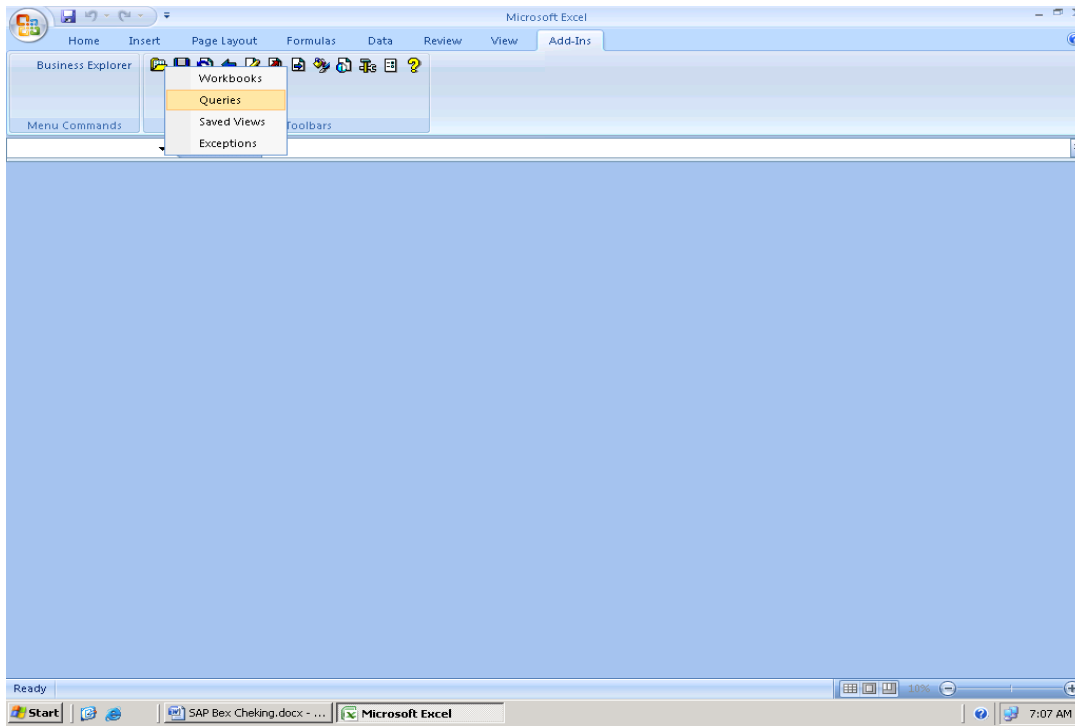
Click on Enable Macros



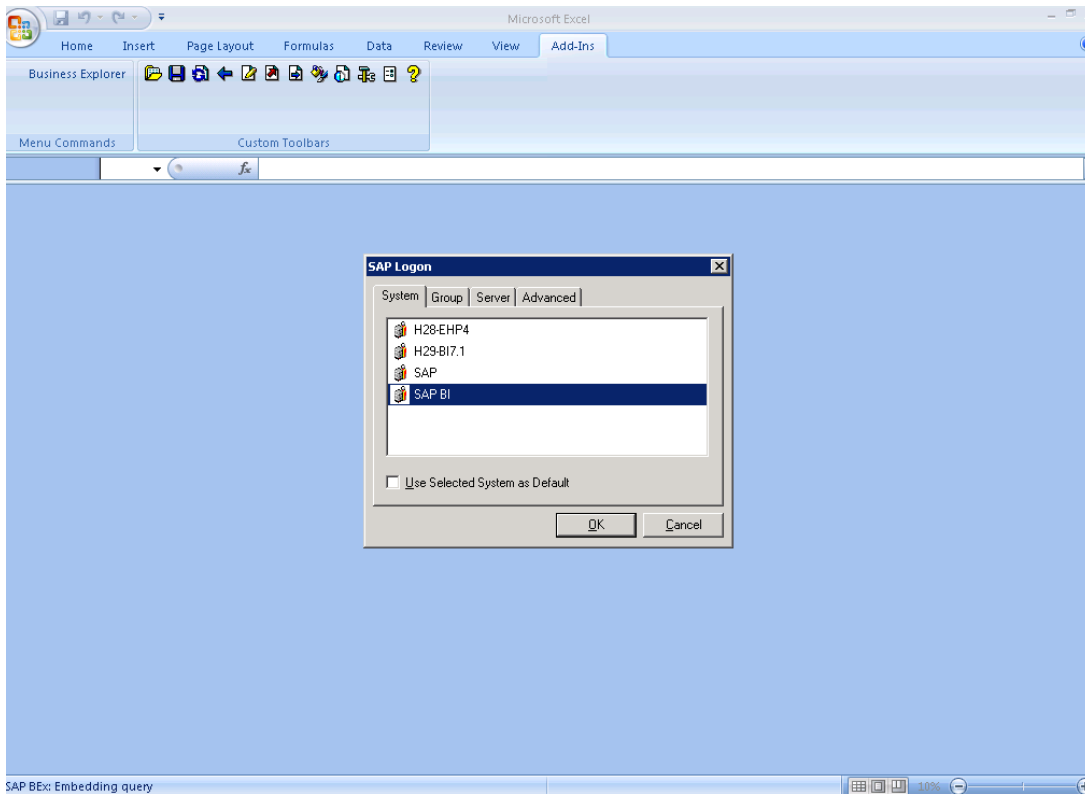
Click on Add-Ins



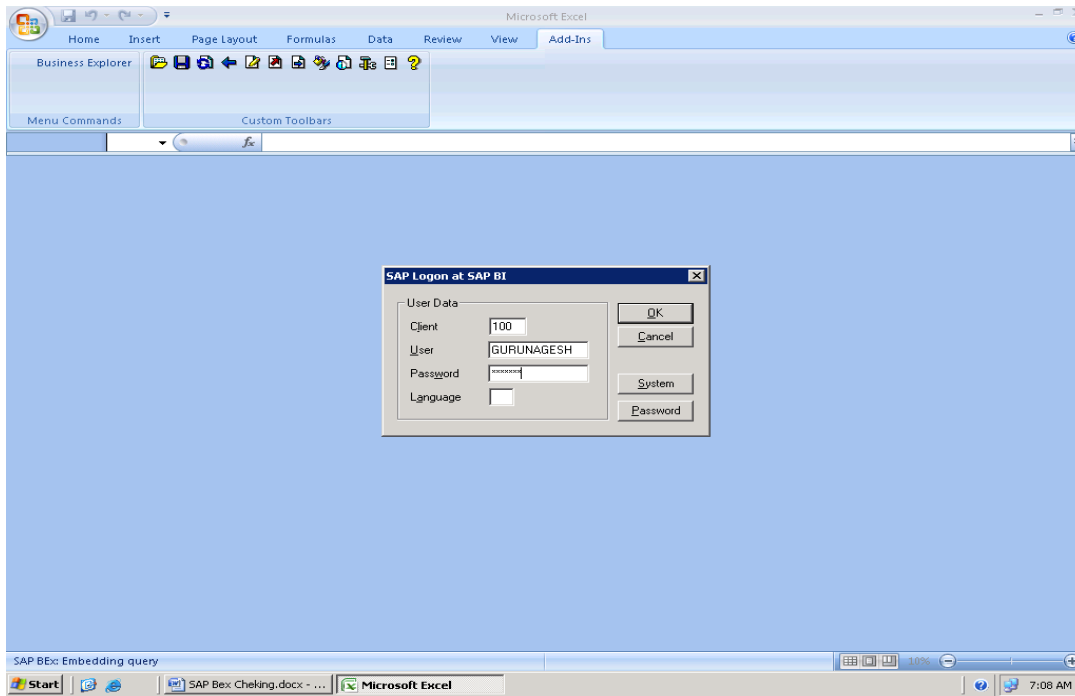
Open Workbooks or Queries any one



Open SAP BI → click on ok



Set the login details → click on ok



Then working BEX Analyzer (SAP BW 3.x)

